

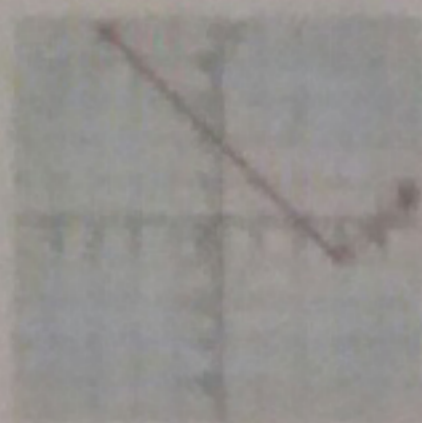
Section 6: Graphing Absolute Value Equations

19. Which of the following is the graph of the absolute value equation below?

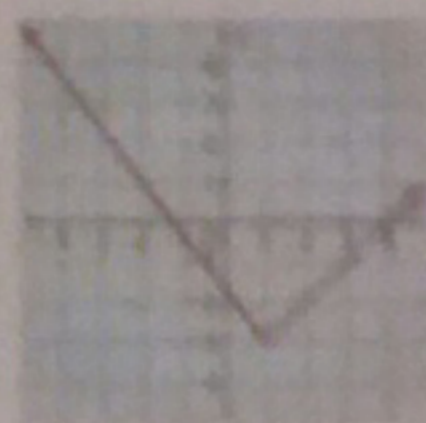
$$y = a|x - h| + k$$

$$y = |x - 3| + 1$$

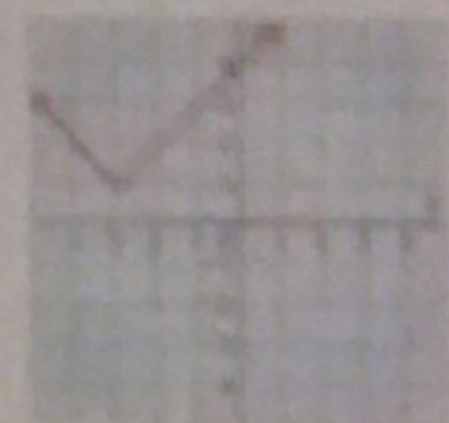
A.



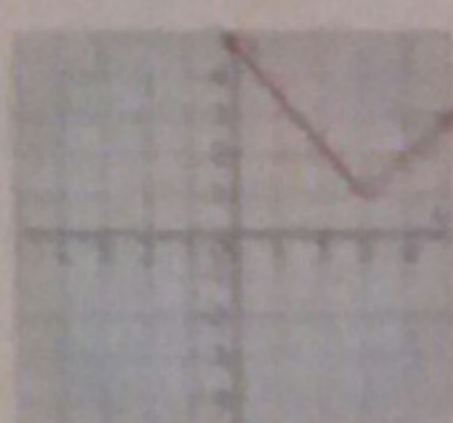
B.



C.



D.



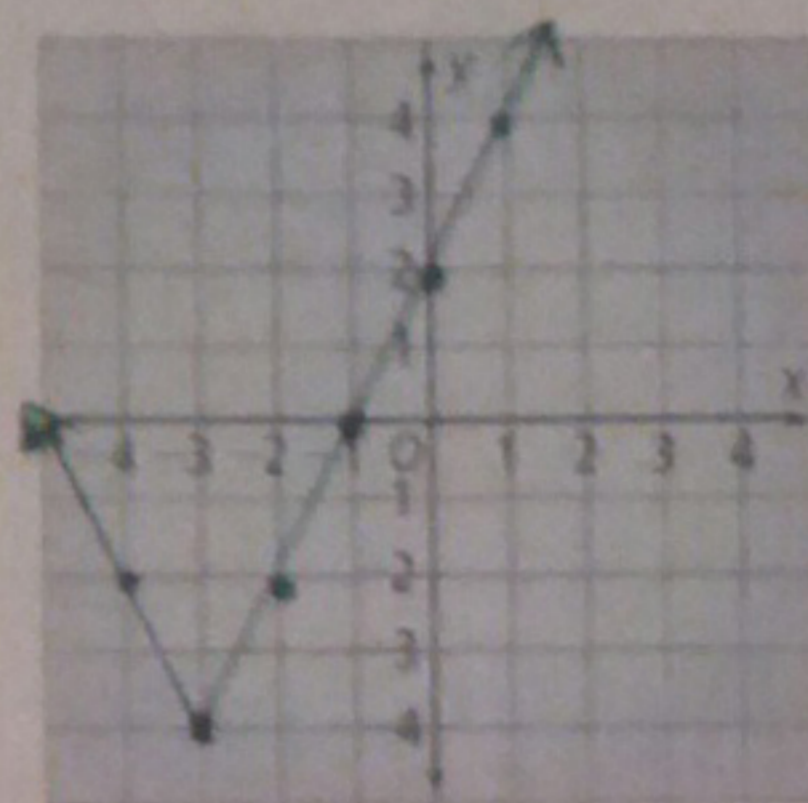
vertex $(h, k) = (3, -1)$

absolute value = "V" shaped graph

20. Graph the absolute value equation on the coordinate grid below.

$$y = 2|x + 3| - 4$$

$$y = a|x - h| + k$$



$a = 2$ ← slope of each branch

$h = -3$

$k = -4$

vertex $(-3, -4)$